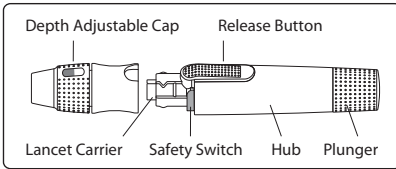


Instructions for the RIGHTEST™ GD500 Lancing Device



The RIGHTEST Lancing Device GD500 is a reusable lancing device intended for acquiring capillary blood samples for the purpose of blood glucose testing. The RIGHTEST Lancing Device is recommended for use by a single user. If shared between multiple users, the Lancing Device must be cleaned and disinfected between each use. A new disposable sterile lancet must be used for each sampling. A depth adjustable cap allows the penetration depth to be tailored to the requirements of each user.

Special Features

- Special Safety Design: Removing the cap automatically relieves the trigger to prevent accidental pricking if the release button is pressed.
- Lancet Ejection Function: Hold down the release button and pull the plunger at the same time to eject the used lancet.
- Less Painful Pricking: Vibration-free lancet guidance technology makes pricking almost painless.
- Appropriate Spring Force: Pulling back the plunger loads the spring with sufficient force to prick your skin easily without excessive pain.
- Clear indication of depth penetration: allow user to adjust for proper sample volume easily.

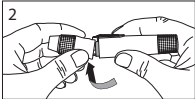
Cautions

- Be careful not to be pricked by the lancet, when removing the depth adjustable cap.
- The RIGHTEST Lancing Device is intended for use by a single user. If used by another user, the RIGHTEST Lancing Device must first be cleaned and disinfected.
- Do not disassemble the lancing device other than as specified in the Instructions for Use.
- Storage temperature: -10 - 60°C (14 - 140°F).



Warning

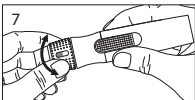
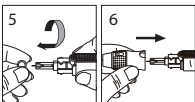
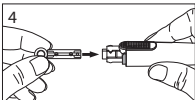
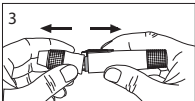
The lancing device contains some small parts which may present a choking hazard for children, please do not place the device in a place where children can easily reach it.



Instructions For Use

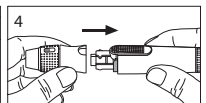
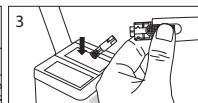
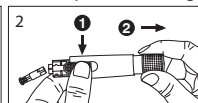
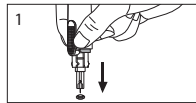
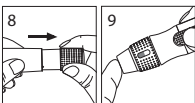
Preparing the Lancing Device

1. Wash and dry your hands.
2. Hold the depth adjustable cap in one hand and the hub in the other hand. Bend the cap downwards until a gap appears. The device will gently pop open.
3. Pull apart both ends to separate cap from the hub.
4. Insert a new disposable lancet firmly into the lancet carrier.
5. Twist off and set aside the lancet cap of the lancet needle for later use.
6. Reconnect the depth adjustable cap to the hub.
7. Rotate the clear top part of the cap to adjust the depth. Check the number of lines visible in the View Window. More lines correspond to a greater depth. Try:
"▢▢▢" for soft or thin skin;
"▢▢▢▢" for ordinary skin;
"▢▢▢▢▢" for thick or calloused skin.
8. Pull back the plunger until you hear a click. The device is now primed. Let go of the plunger. It will return to its original position.
9. Place the end of the lancing device against your fingertip and press the release button to fire. You can use this blood sample to perform a blood glucose test.



Lancet Disposal

1. Separate the cap from the hub. Press the lancet needle into the side of its original lancet cap.
2. (1) Hold down the release button and (2) pull back the plunger to eject the lancet.
3. Discard the lancet into a suitable biohazard container.
4. Replace the depth adjustable cap after finishing the test.



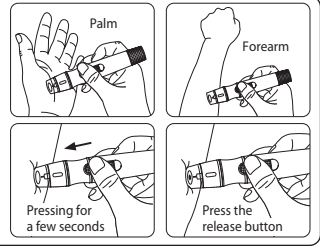
Cleaning and Disinfecting

- Frequency: at least once a week.
- Wipes using Isopropanol as the active ingredient are safe for use with the lancing device. (Tested brand: Caviwipes, manufacturer: Metrex)
- Procedure:
 1. Wipe down the entire surface of the lancing device using disinfecting wipes to remove all dirt, dust, blood or other bodily fluids.
 2. Take a new disinfecting wipe and wipe the meter thoroughly again.
 3. Allow the surface to remain wet for 2 minutes.

Alternative site testing-palm or forearm blood sampling

- Change the depth adjustable cap to the clear cap of your RIGHTEST Lancing Device.
- To increase blood flow, massage the target sample area for a few seconds.
- Press and hold the lancing device against the target area and press the release button.
- Continue holding the lancing device against the target area.
- Gradually apply more pressure until you can see the droplet is big enough (refer to RIGHTEST Test Strip Insert).

Note: For blood glucose testing procedure, please refer to RIGHTEST User's Manual or Test Strip Insert.



Warranty

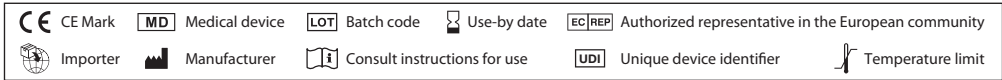
Guaranteed Times of Operation: 6000 times (5 times daily use for around 3 years). Bionime Corporation warrants that your RIGHTEST Lancing Device is free from defects for 2 years from the date of purchase. Any defects in materials or workmanship will be repaired or the device will be replaced free of charge.

This warranty does not apply to the performance of a RIGHTEST Lancing Device that has been misused, tampered with or abused in any way. This warranty will provide you legal rights under law.

Customer Service

We aim to provide great service to our customers. Please review these instructions to make sure you understand how to use this product correctly. If you have any questions or encounter any issues with the product, please contact Bionime Customer Service. You may also consult your local competent authority.

Indication of Used Symbols



Rev. Date: 2023-08

BIONIME

BIONIME CORPORATION

No. 100, Sec. 2, Daqing St., South Dist.,
Taichung City 40242, Taiwan
Tel: +886 4 2369 2388 Fax: +886 4 2261 7586
Email: info@bionime.com http://www.bionime.com

EC REP **Emergo Europe B.V.**
Westervoortsedijk 60
6827 AT Arnhem
The Netherlands



Instructions for the RIGHTEST™ Lancer (Sterile)

Intended use: The disposable blood lancet is used with lancing device to collect capillary blood from fingertip or alternate sites for blood glucose testing or other testing utilizing small amounts of blood.

Intended patient population: Adults and children over 2 years old.

Intended user: The device is intended to be used by professionals and individuals.

Indications: It's suitable for diabetes or blood glucose detection and capillary blood collection.

For more information about compatibility and usage, please see the Instructions for the RIGHTEST GD500 Lancing Device.

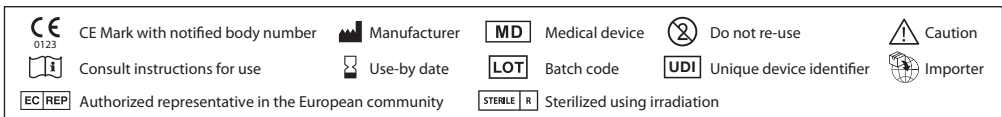
Caution:

- Do not use if protective cap has been previously removed from lancet.
- Do not store lancet in lancing devices.
- Please keep the product away from the children.
- The lancet is for disposable use and do not reuse the lancet.
- Lancets become dull and painful when reused.
- Do not use the lancet beyond the use-by date.
- Discard the used lancet in appropriate container.

Customer Service

- As Lancing Device.

Indication of Used Symbols



Rev. Date: 2023-05-05 (Version 01)

Sterilance Medical (Suzhou) Inc.

No.168 PuTuoShan Road,
New District, 215153 Suzhou, Jiangsu,
PEOPLE'S REPUBLIC OF CHINA
www.sterilance.com

EC REP **Emergo Europe B.V.**
Westervoortsedijk 60
6827 AT Arnhem
The Netherlands



101-3GD500-154
EN